

# NOMAD PRO<sup>TM</sup>

## Handheld X-ray System





# Handheld X-ray System

## Handheld Portability

The NOMAD® Pro joins the family of award-winning Aribex NOMAD X-ray systems and is the most advanced intraoral X-ray system on the market today. Its handheld design improves dental radiography speed, convenience, and quality. The NOMAD Pro's leading technology provides the safest and highest quality handheld intraoral X-ray system. One NOMAD Pro does the work of multiple conventional X-ray systems making it extremely economical.

- Entire unit weighs just over five pounds
- Handheld and portable design moves from room to room eliminating the need for multiple units
- Perfect for use with children, sedated, and special needs patients
- Ideal for clinical, hospital, home-health, nursing home, and out-of-office use
- Includes a one-year product warranty

## Modern Radiation Shielding

The external backscatter shield and internal radiation shielding are specially designed to protect the operator from radiation exposure. In fact, the exposure from using the NOMAD Pro is less than 1% of allowed occupational doses.

### Whole Body Radiation Exposure

50 mSv	Occupational Allowance
3.65 mSv	Yearly Background Exposure from Normal Activities
.33 mSv	Yearly Exposure Using NOMAD Pro with D-Speed Film
.17 mSv	Yearly Exposure Using NOMAD Pro with a Digital Sensor

Radiation exposure using the NOMAD Pro, in millisieverts (mSv), is shown for a clinical scenario with one operator performing 7,200 X-rays per year. 50 mSv is the allowed occupational dose by regulatory agencies.



## Digital Sensors or Film

Whether you use the latest digital sensors or dental film, the NOMAD Pro will produce high-quality diagnostic images. The NOMAD Pro works with all digital sensors, films, and phosphor plates.

## Time Savings

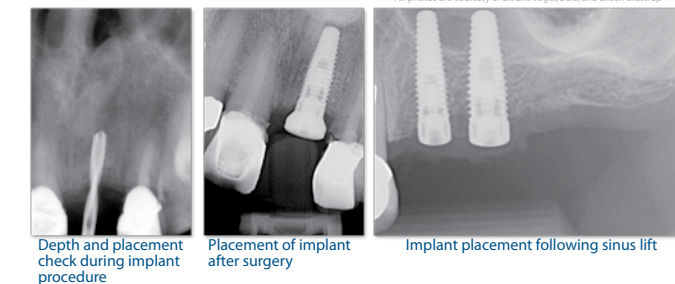
The NOMAD Pro's color LCD screen, simple touch controls, and handheld design saves time.

- Handheld design allows operator to stay with the patient, thereby reducing time required for X-ray procedures
- Quickly adjust exposure time with simple controls
- Ability to save custom exposure settings for fast recall
- Icons quickly identify tooth, receptor, and patient type

## Sharp, Clear Images

The NOMAD Pro produces the highest quality images

- No blur from hand movement
- 0.4 mm focal spot produces sharp, high resolution images
- High-frequency, 60kV DC X-ray generator produces clear images while reducing patient dose



Depth and placement check during implant procedure | Placement of implant after surgery | Implant placement following sinus lift

## Long Battery Life

Hundreds of images can be obtained from one battery charge. The battery is incorporated into the handle which is easily removed for charging. A battery icon on the LCD screen displays current battery levels and indicates when it needs to be charged. The NOMAD Pro system comes with 2 battery handles and a charging cradle to always ensure a charged battery.



# NOMAD PRO™ Tech Specs

Battery	Lithium Polymer, 22.2V, 1.25 Ahr
Anode voltage	60 kV true DC
Anode current	2.5 mA
Exposure time range	0.01 - 1.00 s
Focal spot	0.4 mm
Inherent filtration	>1.5 mm Al equivalent
Source to skin distance	20 cm
X-ray field	60 mm round
Maximum duty cycle	1:60
Total weight	2.5 kg (5.5 lbs.)
Approximate dimensions	W 16 cm L 27 cm H 25 cm (W 6.25" L 10.75" H 10")

NOMAD Pro is designed and manufactured in compliance with IEC 60601-1, 60601-1-1, 60601-1-2, 60601-1-3, 60601-2-7, 60601-2-28, and with DHHS Rules 21 CFR Subchapter J, applicable at date of manufacture.



**Aribex, Inc.**  
**744 South 400 East**  
**Orem, UT 84097 USA**

**Phone: 801-226-5522**  
**Toll Free: 866-340-5522**  
**Fax: 801-434-7233**

[www.aribex.com](http://www.aribex.com)

US and foreign patents pending.

Aribex, NOMAD, and NOMAD Pro are trademarks and or registered trademarks of Aribex, Inc. ©2008 Aribex, Inc. • MC-0018, Rev. A. February 2008